

## AK and AM sensors

PHOTOELECTRIC

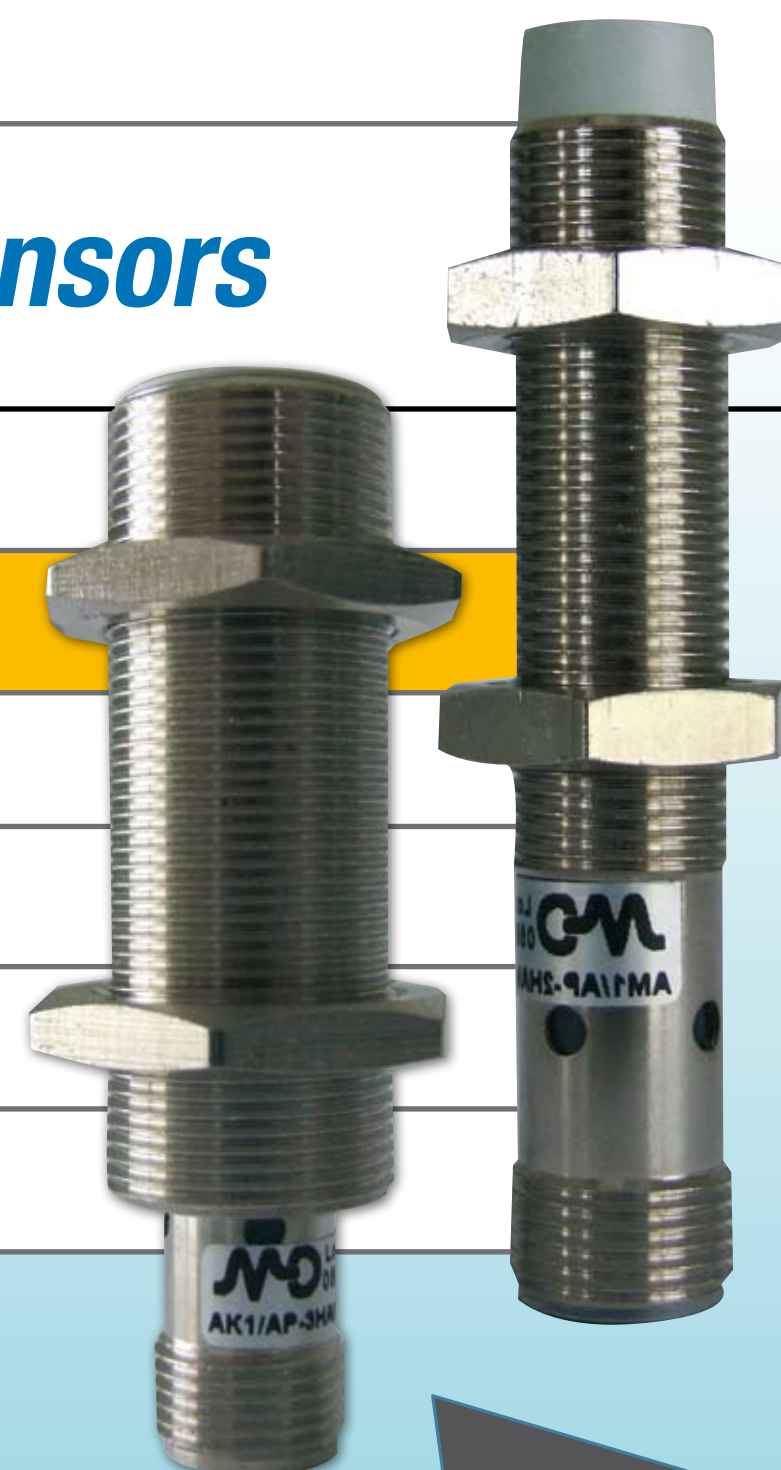
PROXIMITY

SAFETY

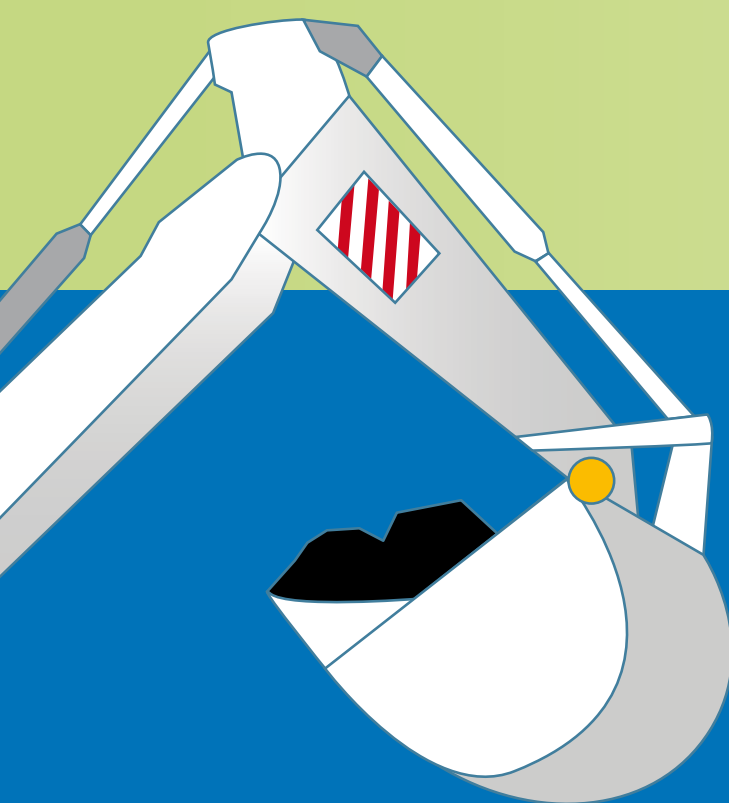
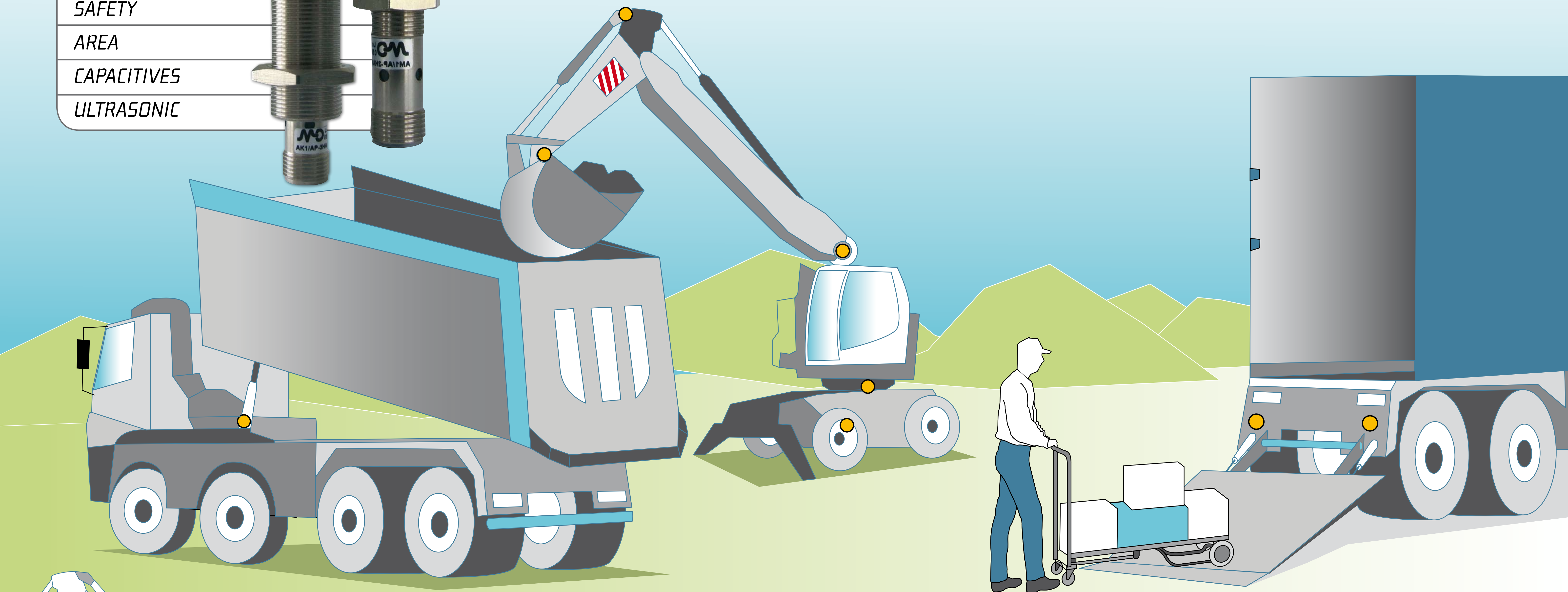
AREA

CAPACITIVES

ULTRASONIC



# Ideal for earth-moving applications



Construction equipments? Commercial vehicles? **MD Micro Detectors inductive sensors** are used **to detect the position of loaders, dumper, tail-lift**. Sensors completely fulfilled of resin to resist to the harsh working conditions.

**MD. Sensors serving automation**



Micro Detectors

[www.microdetectors.com](http://www.microdetectors.com)