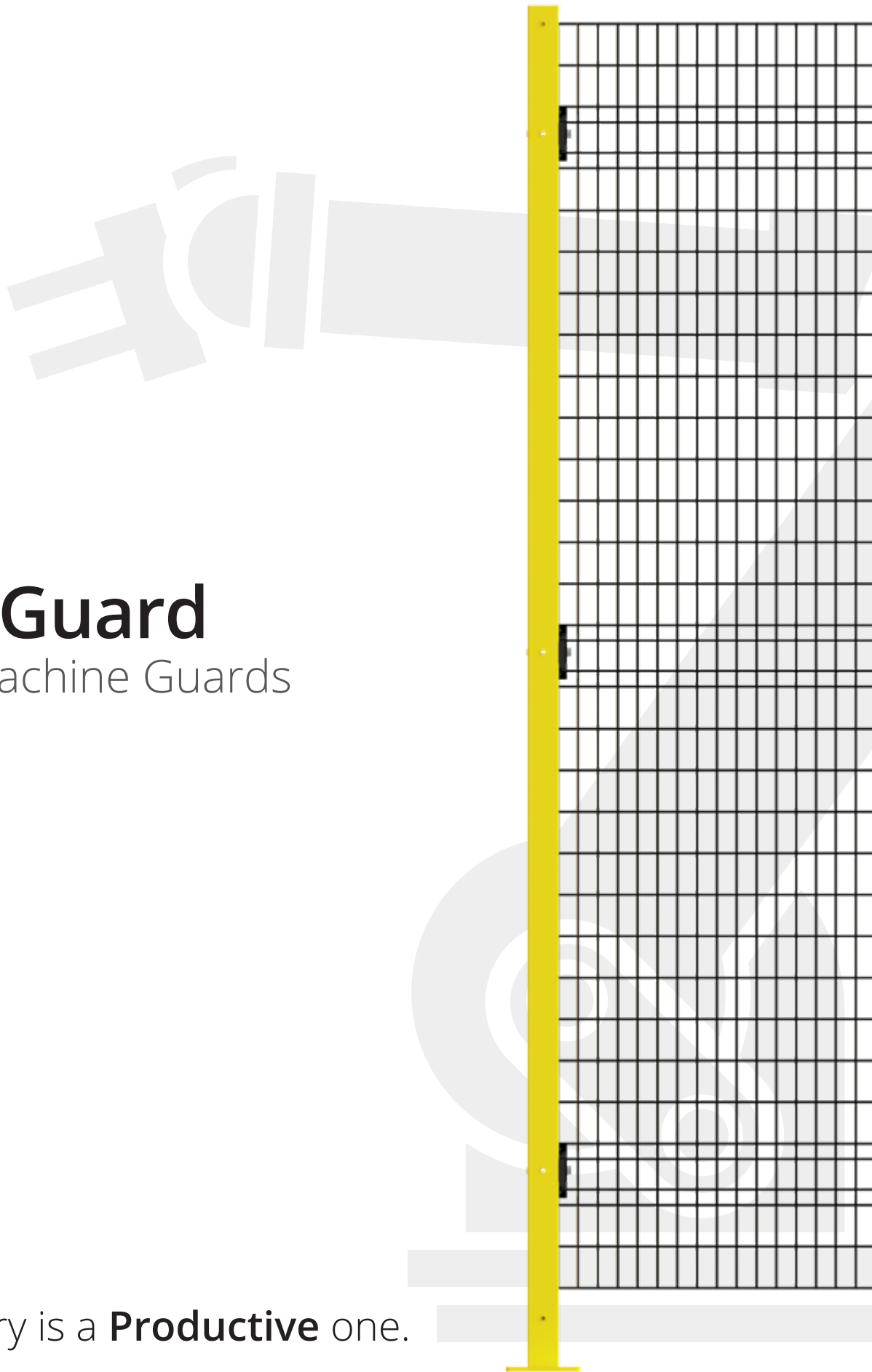


AdaptaGuard

Modular Machine Guards

A **Safe** factory is a **Productive** one.



AdaptaGuard

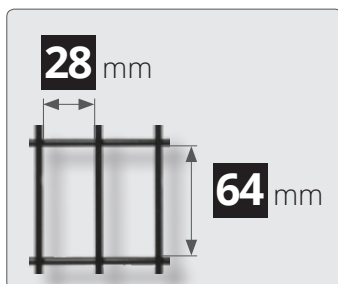
Modular Machine Guards

Maximum simplicity and productivity.

AdaptaGuard frameless modular guarding system perfectly combines practicality and robustness and is an ideal solution where there is a high risk of mechanical impact.

The frameless 4 mm steel wire panel is strengthened by transversal folds and it is connected to 50 x 50 mm uprights by strong retaining fasteners. The high thickness heavy baseplate stabilizes the post during assembly.

AdaptaGuard is quick to assemble: a single type of post for linear, angular and door mounting reduces setup time, the wide ribs facilitate the use of the electric screwdriver, while the frameless construction allows panel sizes to be adjusted speedily on site.



Safety

EN ISO 13857

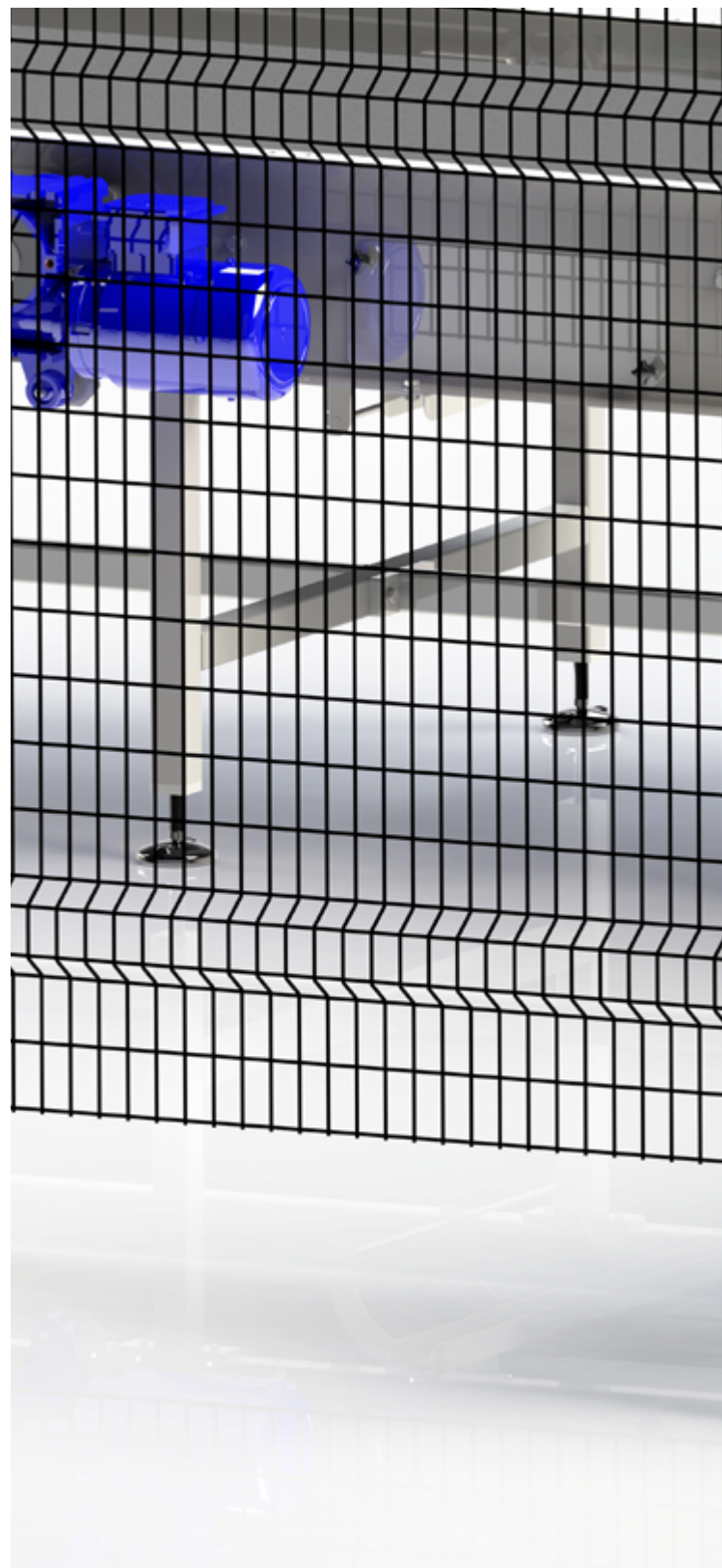
A 28 x 64 mm slot opening allows the installation of the fence 200 mm from the danger zone

POST
mm

50

WIRE Ø
mm

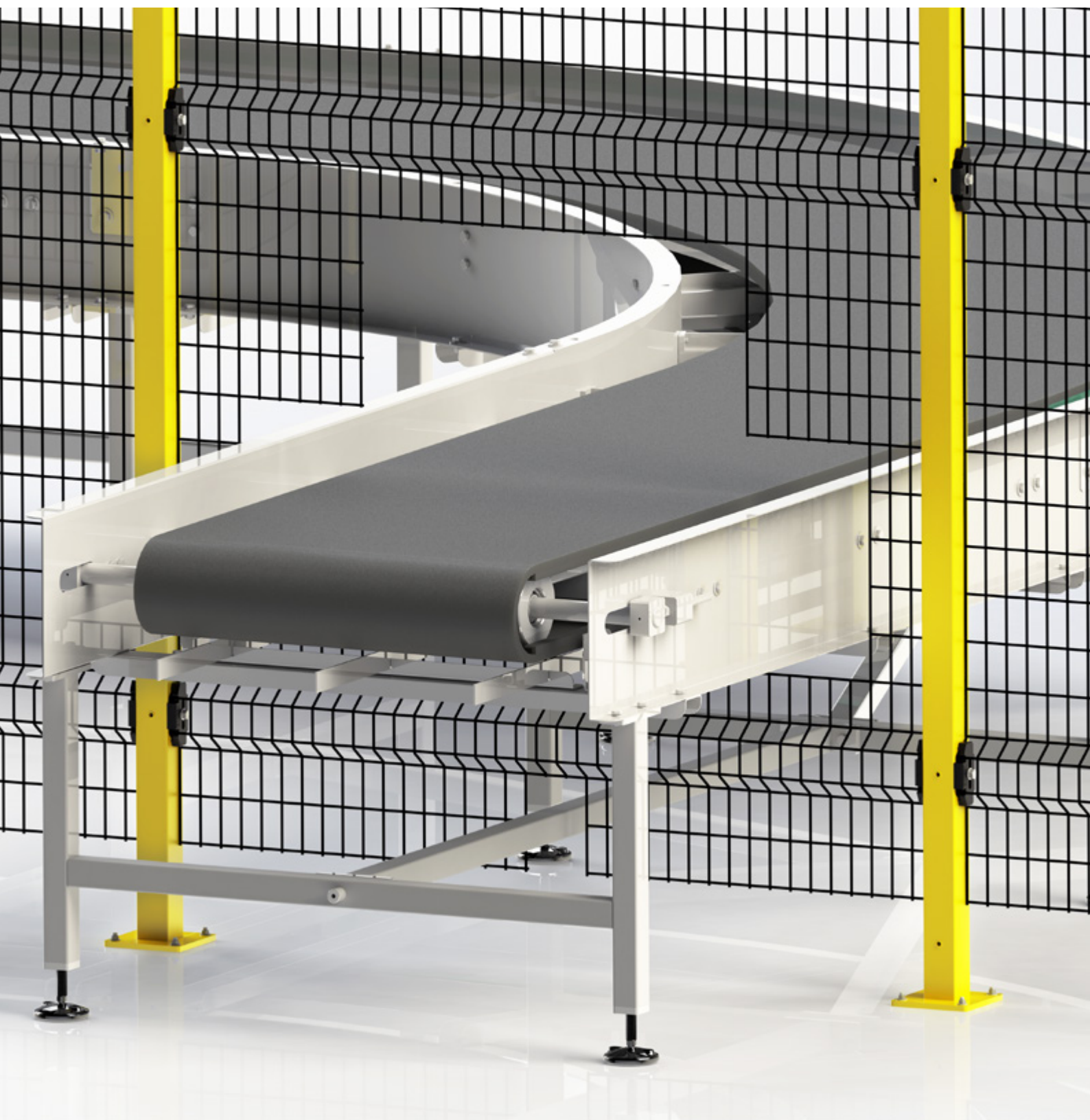
4



Robust

- ✓ 4 mm welded wire construction
- ✓ Reinforcement ribs
- ✓ 50 mm uprights
- ✓ 120 x 120 x 8 mm welded baseplate

SATECH
Modular Machine Guards



Practical

- ✓ High-strength nylon-fiberglass fastener
- ✓ 1 post
to suit linear, angular or door mounting
- ✓ +30% assembly speed

Adaptable

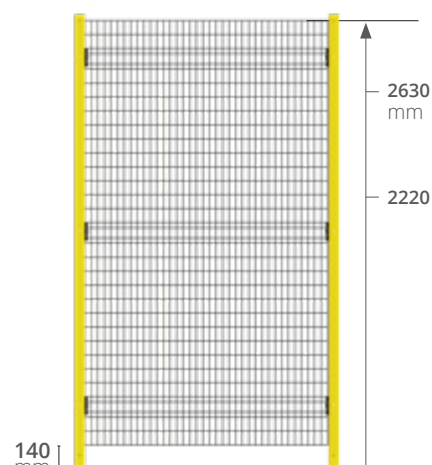
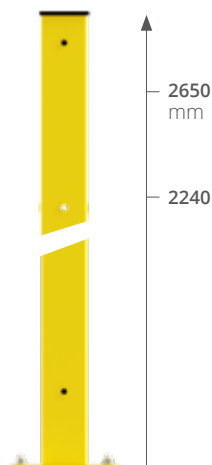
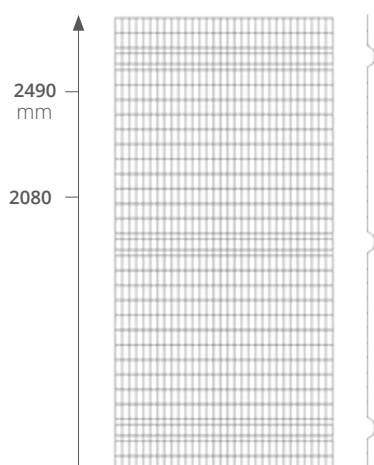
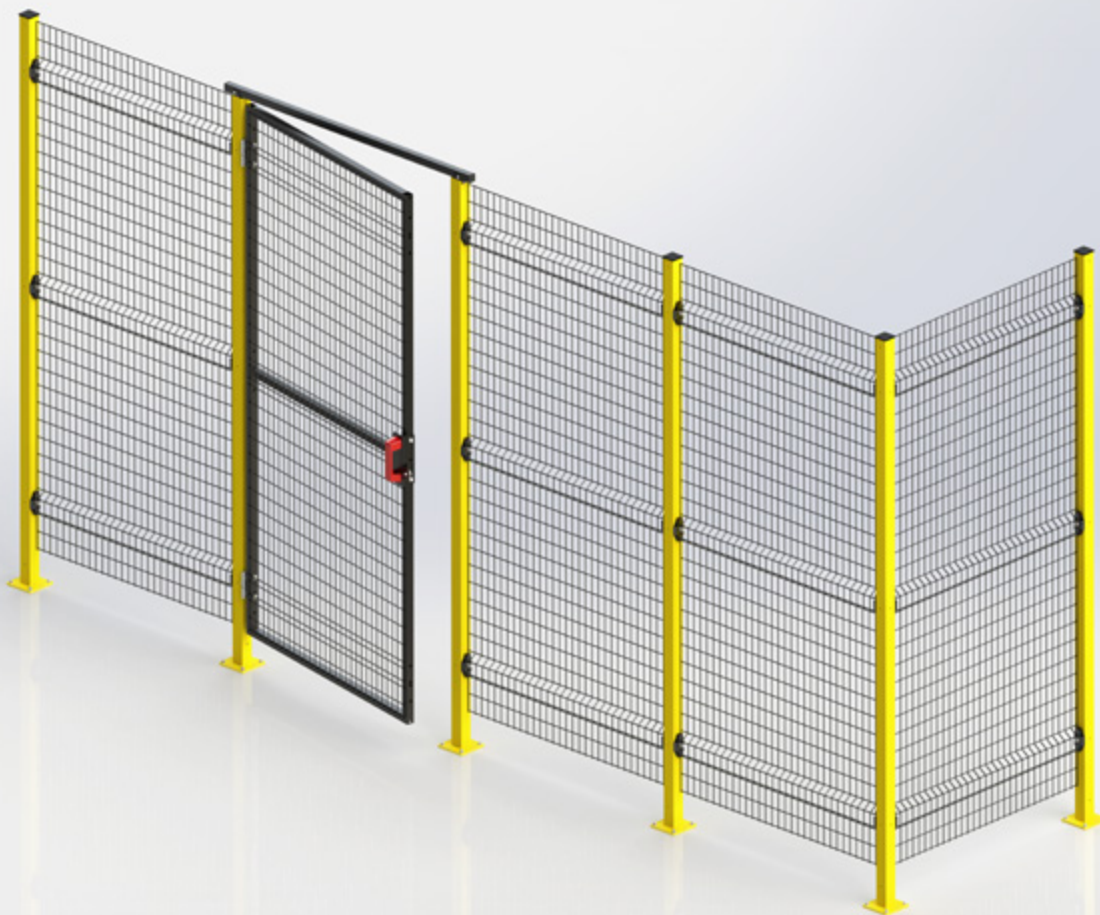
- ✓ Frameless, easily adjustable
- ✓ Adjustable height
- ✓ To suit any perimeter

AdaptaGuard

Modular Machine Guards



AdaptaGuard fast and efficient installation is achieved by simple, easy-to-use connectors which fit securely to the uprights, while the layout can be easily configured to suit the machinery and available space.



Panels

Mesh: 32 x 68 x 4 mm

Heights: 2080, 2490 mm

Bases: 196, 292, 676, 772, 996, 1188, 1476, 1988 mm

Posts

Section: 50 x 50 x 1,5 mm

Baseplate: welded, 120 x 120 x 8 mm, with 4 anchoring points

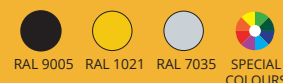
Heights: 2240, 2650 mm

Overall protection height: **2220 - 2630 mm**

Painting:

Epoxy-polyester powder (for internal use only)

Colours:



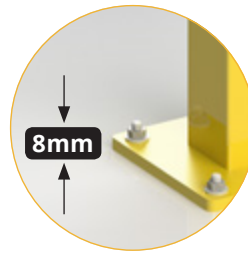
Robust



Wire – 4 mm drawn steel, high tensile strength



Greater stability is achieved by connecting the panels to the uprights at the position of the reinforcement ribs



High-thickness baseplates (120 x 120 x 8 mm) ensure maximum stability



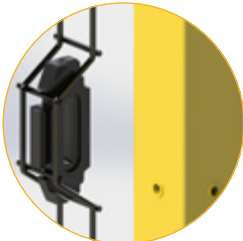
50 x 50 mm posts with "Flow Drill" holes allow a quick and easy mounting



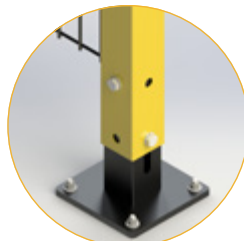
Impact test EN ISO 14120

AdaptaGuard has passed the severe dynamic resistance tests according to the procedure contained in **EN ISO 14120** Standard (Hard body / Pendulum Test) up to **1600J**

Practical



High-strength nylon-fibreglass fasteners are ergonomically shaped to facilitate quick and easy assembly of the system



An adjustable baseplate (available **as an option**) allows to level the ground bearing of the posts to uneven floors

Captive Retained fastenings

The fastening system features a captive fastener according to **EN ISO 14120** and **2006/42/EC** - Machinery Directive

Adaptable



ISO Compliance

AdaptaGuard complies with the following EUROPEAN and INTERNATIONAL STANDARDS: **ISO 14120**; **EN ISO 12100**; **EN ISO 13857**; **EN ISO 14119**; **EN ISO 10218-2**; **2006/42/EC** Machinery Directive

Doors

The 30x30 mm flat mesh panel draws the design of the reinforcement folds ensuring uniform aesthetics between fixed and movable guards and allowing the new AdaptaGuard to be compatible with the entire range of Satech doors

SINGLE HINGED DOORS

Openings from 700 to 1500 mm



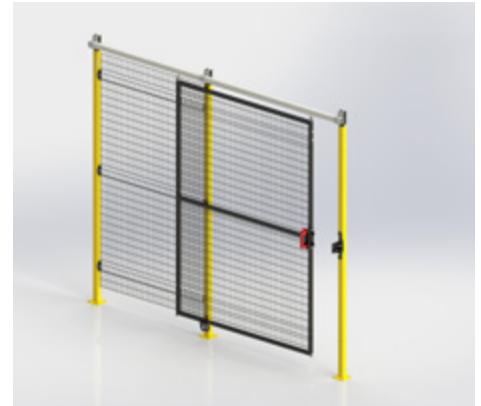
DOUBLE LEAF DOOR

Openings from 1400 to 3000 mm



SINGLE SLIDING DOOR WITH UPPER GUIDE

Openings from 700 to 1500 mm



OPPOSED SLIDING DOOR WITH UPPER GUIDE

Openings from 1400 to 3000 mm



OPEN PASSAGE SLIDING DOOR 2.0

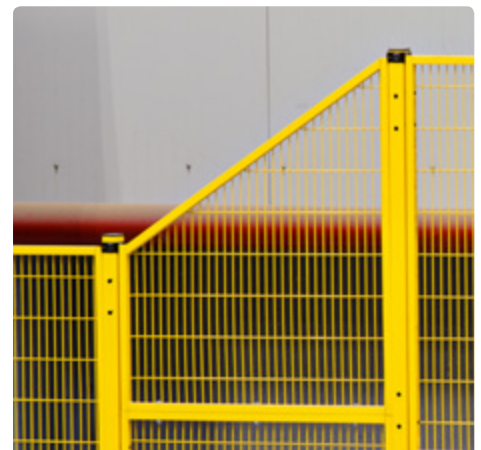
Openings from 1400 to 6000 mm



Tailored Production

panels, doors and special products made on drawing

In addition to the standard ready-to-stock products we can manufacture panels with special shapes and dimensions, customized colors, up-and-over doors and manual, electric or pneumatic operated vertical doors



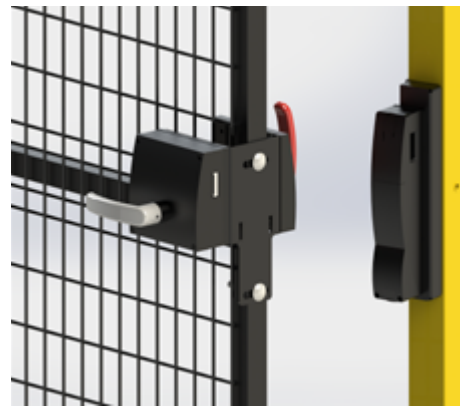
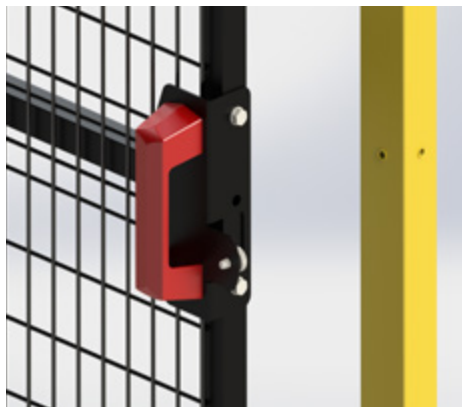
Locks

Adapta**Guard** doors can be completed with over 150 locks and programmable electronic locking systems

MAGNET LOCKS

MECHANICAL

INTERLOCKED



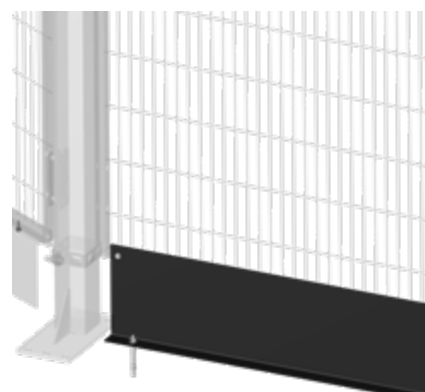
Accessories

A full range of accessories ensures maximum versatility and customization options

MICROSWITCHES AND DEDICATED BRACKETS

COMPLEMENTARY FITTINGS

FINISHINGS

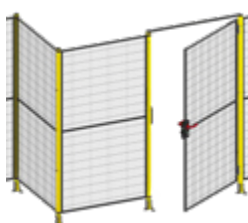


Satech **Systems** to each his own

We manufacture and market different protection systems, each designed for specific needs. To receive complete documentation of our product lines, please contact us at:

customer.service@satech.it

Series **BASIC**



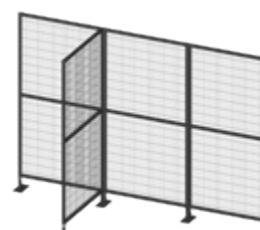
POST mm	FRAME mm
40	20

Series **STRONG**



POST mm	FRAME mm	FRAME mm
60	20	30

Series **GREEN FAST**



FRAME mm	FRAME mm
30	20

SATECH, YOUR GLOBAL PARTNER FOR SAFETY

Safety of personnel working in production environments has been our specialty for nearly 20 years. Our strengths are compliance to international standards, stock ready modular products and special attention to customer needs.

Our Technical Department designs solutions for the safety and conformity of your industrial machinery, robots and production plants. In over 12,000 sqm of production facility in Calco (LC), an automated line of 2,500 panels per day and a powder coating unit allow us to provide you with a product that is superior in quality.

We are located with 4 subsidiaries and a global distribution network. You can call on us for a new project or a simple integration of an existing one.

Satech guarding systems enable machine operators to work safely and are built to last over time. In our warehouse of over 5,000 sqm we stock 5 different product lines, and even your most specific requirements are met with professional and qualified advice. Satech Special Product Department is always ready to design solutions tailored for your every need.

Your satisfaction is our first priority. Great versatility, complementary systems, a variety of accessories and quotations provided with 2D and 3D AutoCad® and Inventor® drawings. Our commitment is to make your company safer and more productive.

SATECH
Modular **Machine Guards**

Satech Safety Technology SpA

Via Scagnello, 48
I-23885 Calco (LC)
Phone +39 039 9911 811
Fax +39 039 9911 870

info@satech.it | www.satech.it

 **SCHMERSAL**
Belgium

Schmersal Belgium

Nieuwlandlaan, 73

B-3200 Aarschot

Phone +32 16 57 16 18

Fax +32 16 57 16 20

info@schmersal.be www.schmersal.be

YouTube

