

## BlueGuard

Modular Machine Guards

hygienic fencing

A **Safe** factory is a **Productive** one.



# BlueGuard

## Modular Machine Guards

hygienic fencing

### Maximum safety and hygiene.

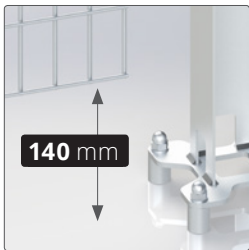
BlueGuard modular system is the result of Satech's twenty-year experience and combines safety, flexibility and compliance with the high hygiene standards required by the agro-food, chemical and pharmaceutical markets.

The frameless **4 mm** welded wire panel strengthened by transversal folds is made of **AISI 304** stainless steel finished by passivation. The panel is fixed to **inspectable U-section posts** by means of high-resistant **fast captive connections** made of technopolymer and stainless steel.

BlueGuard is quick to assemble: a **single type of post** for linear, angular and door mounting to reduce setup time. Wide ribs facilitate the use of electric screwdriver, while the frameless construction allows panel sizes to be **adjusted** speedily on site.

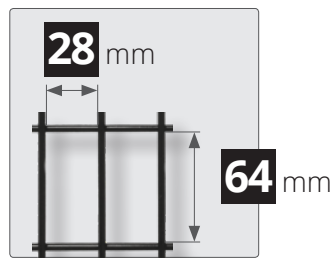
### Safety

EN ISO 13857



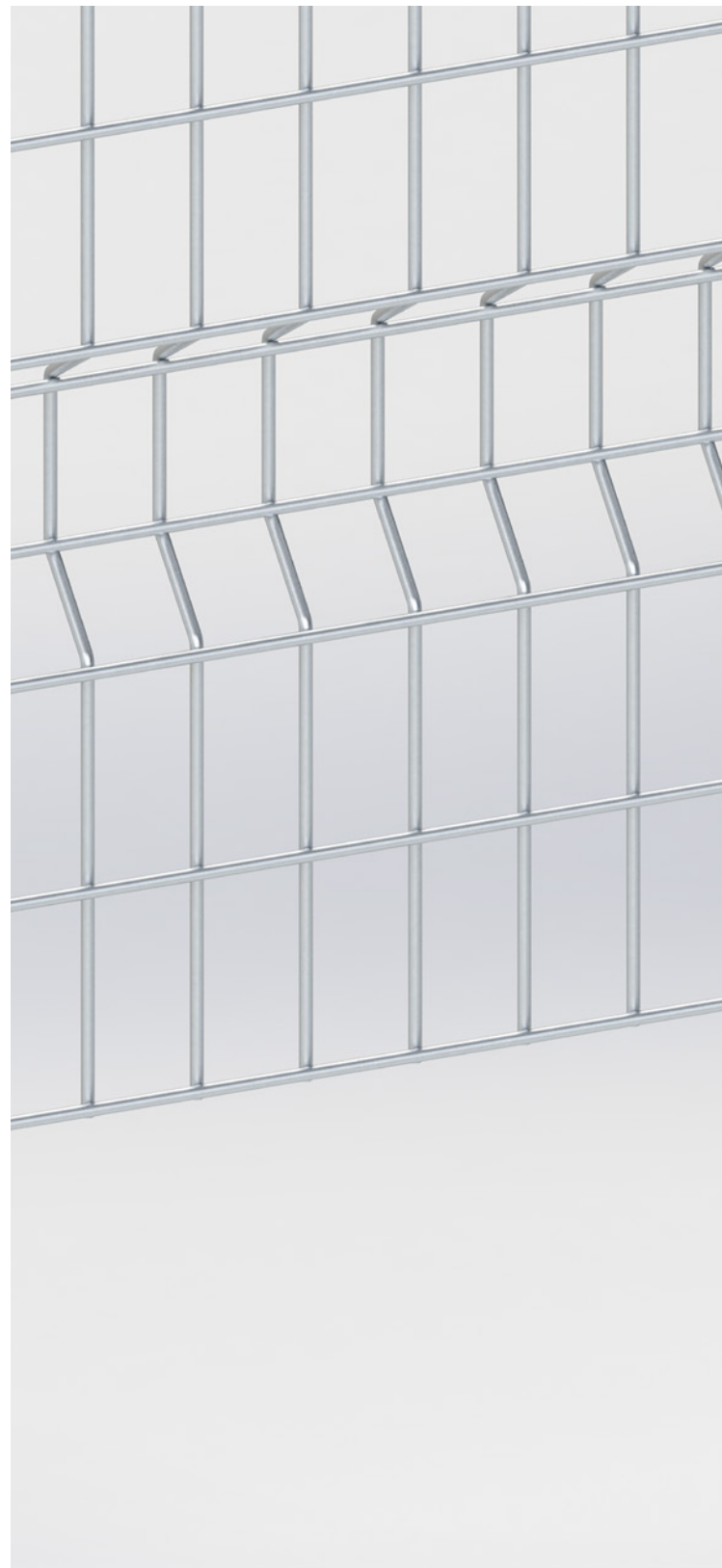
140 mm ground clearance

EN ISO 13857-4.3



28 x 64 mm slot opening allows to install the fence 200 mm from danger zone

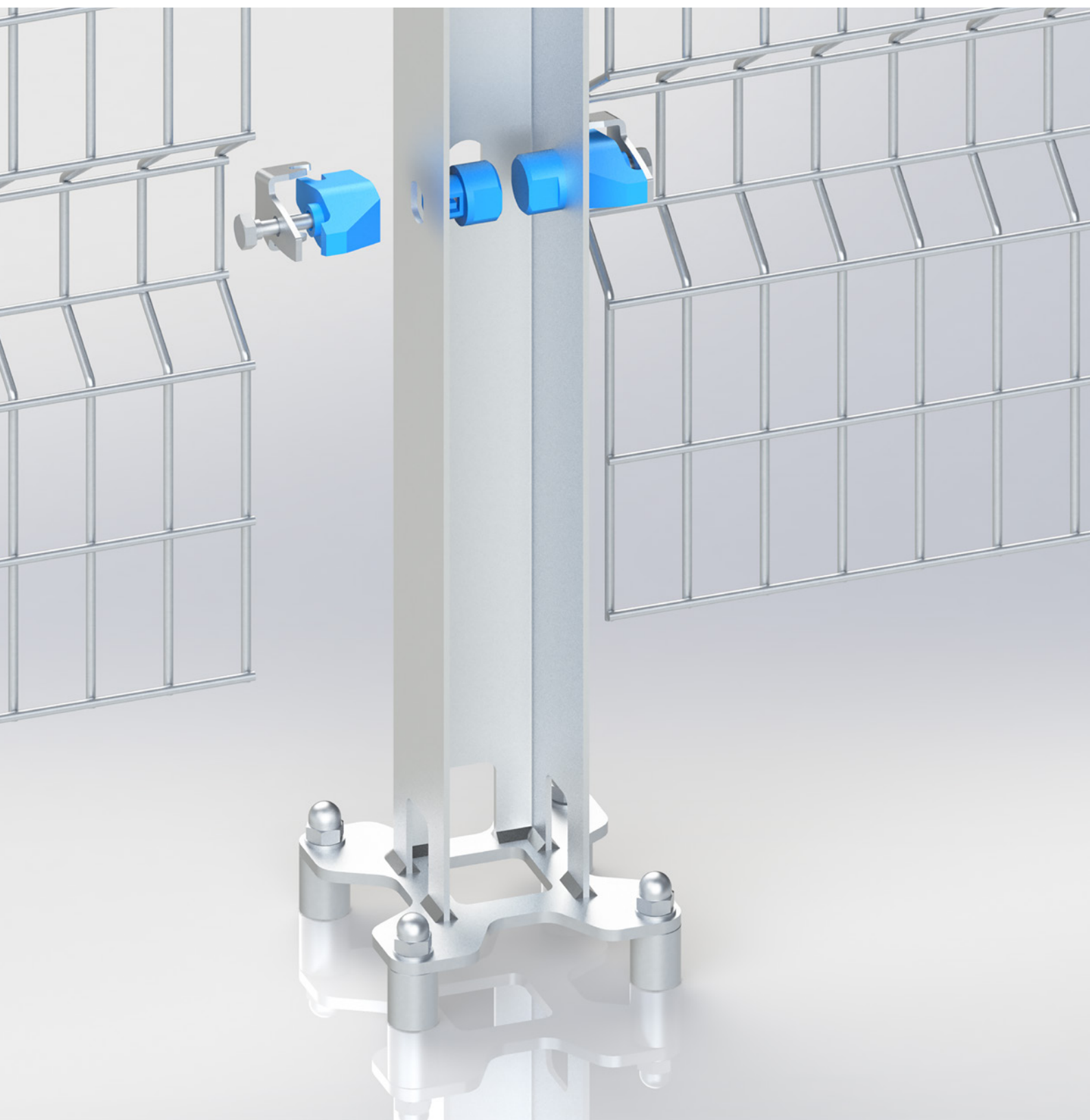
EN ISO 13857-4.2



### Robust

- ✓ Stainless Steel AISI 304 and technopolymer
- ✓ 4 mm welded wire with reinforcement ribs
- ✓ Resistant to high-pressure water jets

**SATECH**  
Modular Machine Guards



## Practical

- ✓ Reduced number of components
- ✓ Captive quick fasteners
- ✓ Frameless, easily adjustable on site

## Hygienic

- ✓ Durable
- ✓ Easy Maintanable
- ✓ **ECOLAB**® Tested and Certified



# BlueGuard

Modular Machine Guards **hygienic fencing**

## Robust



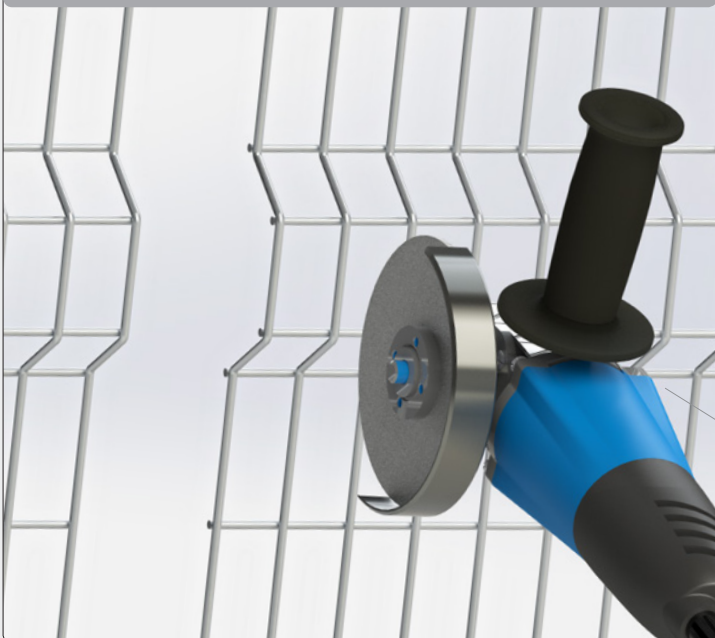
BlueGuard fast and efficient installation is achieved by simple, easy-to-use connectors which fit securely to the uprights, while the layout can be easily configured to suit the machinery and available space

Passivated **AISI 304 Stainless Steel** and technopolymer to ensure great resistance to high-pressure water jets

Wire – **4 mm** drawn steel, high tensile strength mesh, with reinforcement ribs

**Greater stability** is achieved by connecting the panels to the uprights at the position of the reinforcement ribs

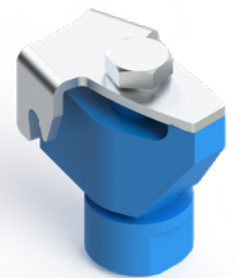
## Practical



**FULLY ADAPTABLE**

**Frameless** construction allows panel sizes to be adjusted speedily on site

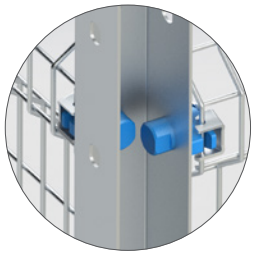
**Captive Retained** fastenings



2-components pre-assembled quick **Captive Retained** fasteners

**EN ISO 14120**  
and **2006/42/EC**

## Hygienic Design **Modular Guard** - in 4 steps



### 1 REDUCED CONTACT SURFACES

minimized in case of metal-to-metal



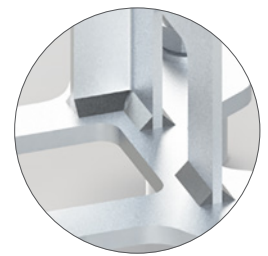
### 2 OPEN DESIGN

allows full cleaning inspection and prevent the accumulation of dust and residues



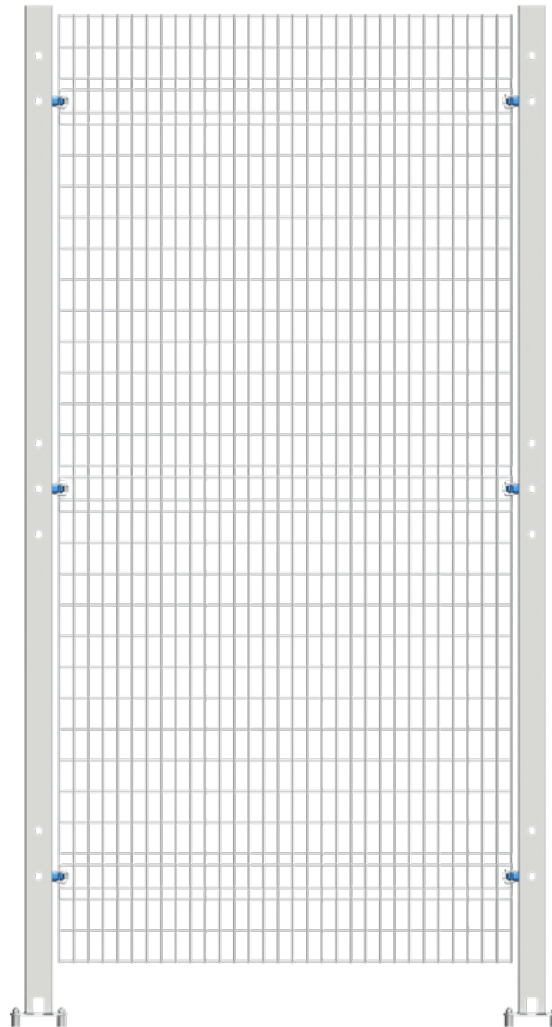
### 3 INCLINED SURFACES and SPACERS

to avoid liquids stagnation and ease cleaning of surrounding areas



### 4 TIG WELDING

maximum cavity reduction to ensure complete sealing of each joint



## Durable

- ✓ Resistant to high-pressure water jets
- ✓ Resistant to corrosion

## Easily maintainable

- ✓ Fully inspectable
- ✓ Prevents accumulation of dirt
- ✓ Allows cleaning of surrounding areas

## Safe

### ✓ **ECOLAB**® Tested and Certified

Detergent and disinfectant resistance tests for **2000** washing cycles (6 years of use) on:

- TOPAZ AC5
- P3-TOPAX 990
- TOPACTIVE DES
- P3-TOPAX 66
- TOPAZ HD3
- TOPAZ MD3



## Regulation Compliance

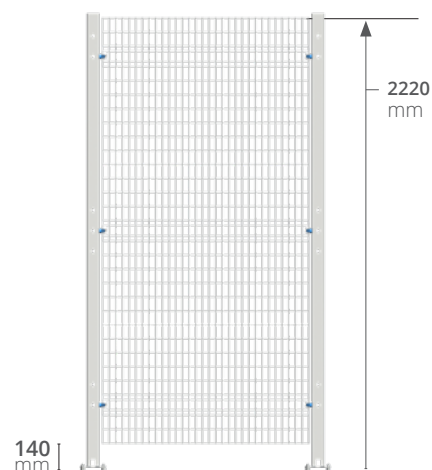
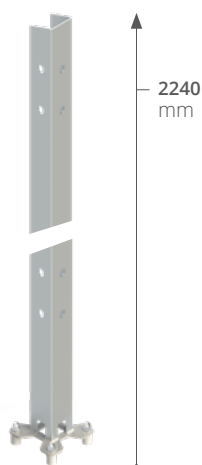
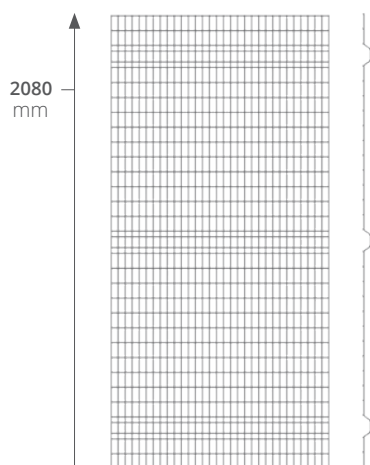
BlueGuard is constructed in compliance with the following EUROPEAN and INTERNATIONAL STANDARDS: **ISO 14120**; **EN ISO 12100**; **EN ISO 13857**; **EN ISO 10218-2**; **2006/42/2/EC Machinery Directive**; **EN 1672-2**; **EN ISO 14159**

# BlueGuard hygienic fencing

## Technical Specifications

POST  
mm  
**60**

WIRE Ø  
mm  
**4**



### Panels

**Mesh:** 32 x 68 x 4 mm  
**Height:** 2080 mm  
**Bases:** 484, 992, 1472, 1988 mm

### Posts

Universal (for linear, corner or end mount) draining 60 x 60 mm U-section  
**Baseplate:** continuous TIG welded with 4 anchoring points  
**Height:** 2240 mm

Overall protection height: **2220 mm**

**Materials - Panels and Posts:**  
Passivated high quality Stainless STEEL AISI 304  
**Materials - Technopolymer:**  
Food contact DOMAMID® 6G30FC





## Door solutions

### SINGLE HINGED DOOR

Opening 1000 mm



#### SIMPLE, SAFE AND SOLID

- ✓ Framed panel with central reinforcements
- ✓ 20 x 30 mm upper bar
- ✓ 4 + 6 mm welded wire flat mesh
- ✓ 180° aperture
- ✓ One panel for both Left and Right opening
- ✓ Hygienic design with inclined surfaces
- ✓ Supplied with Magnet Lock as standard

### SINGLE UPPER GUIDE SLIDING DOOR

Opening 1500 mm



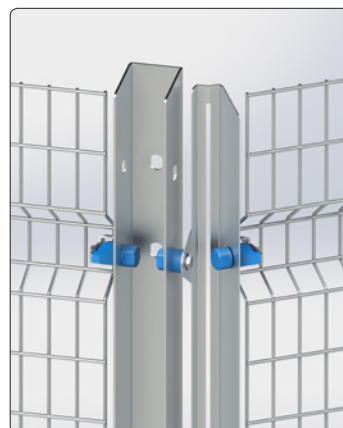
#### LARGER OPENING, GREAT STABILITY

- ✓ Framed panel with central reinforcements
- ✓ 20 x 30 mm upper bar
- ✓ 4 + 6 mm welded wire flat mesh
- ✓ One panel for both Left and Right opening
- ✓ Hygienic design with inclined surfaces
- ✓ Low friction upper trolley
- ✓ Reversed lower slider to avoid dirt accumulation
- ✓ Supplied with Magnet Lock as standard

## Accessories

BlueGuard system can be completed with the following accessories:

- Wind Bracing
- Variable angle kit
- Safety switch brackets



## SATECH, YOUR GLOBAL PARTNER FOR SAFETY

Safety of personnel working in production environments has been our specialty for nearly 20 years. Our strengths are compliance to international standards, stock ready modular products and special attention to customer needs.

Our Technical Department designs solutions for the safety and conformity of your industrial machinery, robots and production plants. In over 12,000 sqm of production facility in Calco (LC), an automated line of 2,500 panels per day and a powder coating unit allow us to provide you with a product that is superior in quality.

We are located with 4 subsidiaries and a global distribution network. You can call on us for a new project or a simple integration of an existing one.

Satech guarding systems enable machine operators to work safely and are built to last over time. In our warehouse of over 5,000 sqm we stock 5 different product lines, and even your most specific requirements are met with professional and qualified advice. Satech Special Product Department is always ready to design solutions tailored for your every need.

Your satisfaction is our first priority. Great versatility, complementary systems, a variety of accessories and quotations provided with 2D and 3D AutoCad® and Inventor® drawings. Our commitment is to make your company safer and more productive.

**SATECH**  
Modular Machine Guards

**Satech Safety Technology SpA**

Via Scagnello, 48  
I-23885 Calco (LC)  
Phone +39 039 9911 811  
Fax +39 039 9911 870

info@satech.it | [www.satech.it](http://www.satech.it)



YouTube

